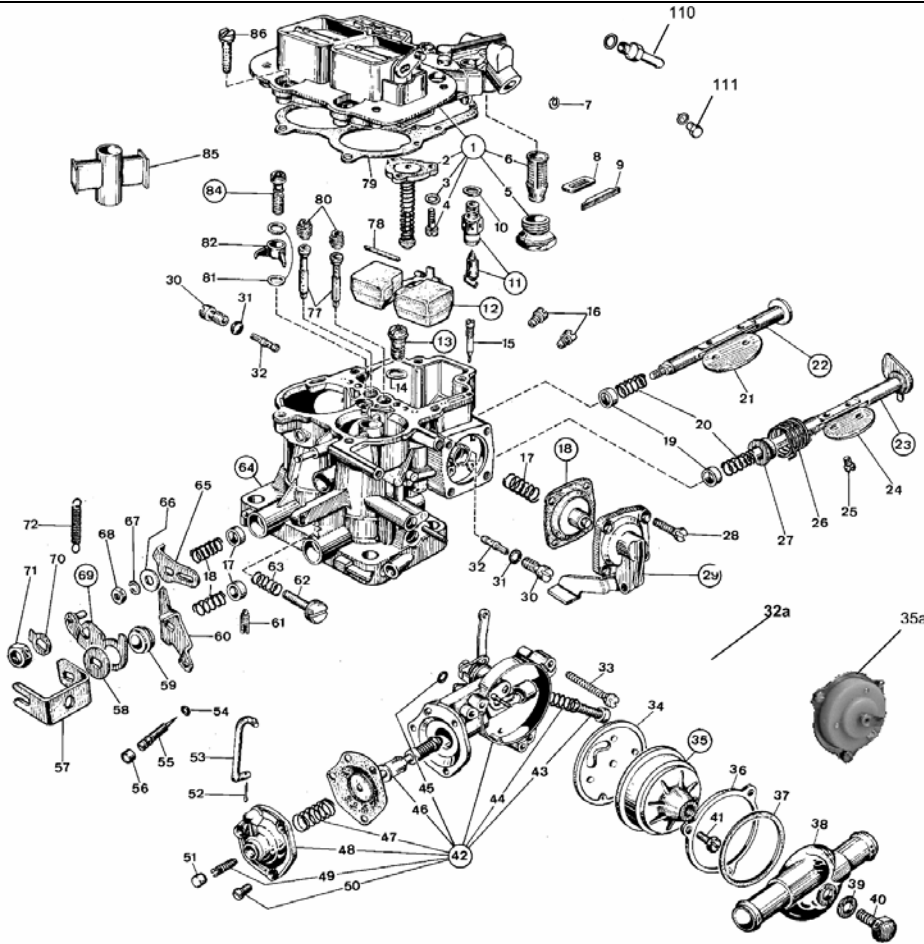


REDLINE WEBER CARBURETORS

32/36 DGEV 32/36 DGAV

22680 033B DGEV

22680 051 DGAV



Common Parts

Rebuild kit 92-3237-05

2) Power valve 57804-097

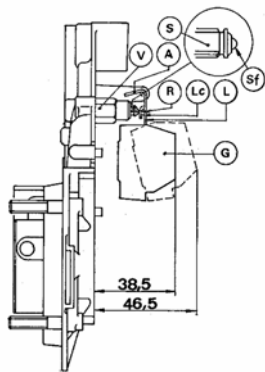
35a) Electric choke 57804-333

32a) Solenoid 43928-060

110) Fuel inlet

8mm 10525-023

6mm 10525-024



Float setting notes

1. Fuel pressure is critical to float spillage.

Redline recommends 2.5 to 3 lbs.

2. For aggressive off-road float drop should be limited to 44 .5 mm max drop

KEY CALIBRATED PARTS

11) 79516-xxx Needle and seat (Steel needle)

79519-xxx (Viton performance needle)

12) 41030-019 Brass Float

41030-020 Nitrofill Float

16) 73801-xxx Main Jet

80) 77201-xxx Air corrector Jet

32) 74409-xxx Primary Idle Jet (choke side)

74403-xxx Secondary Idle Jet (Inlet Side)

some early models have 74403-xxx on both sides

82) 76226-xxx Accelerator pump Jet

76212-xxx Performance Double pump jet